

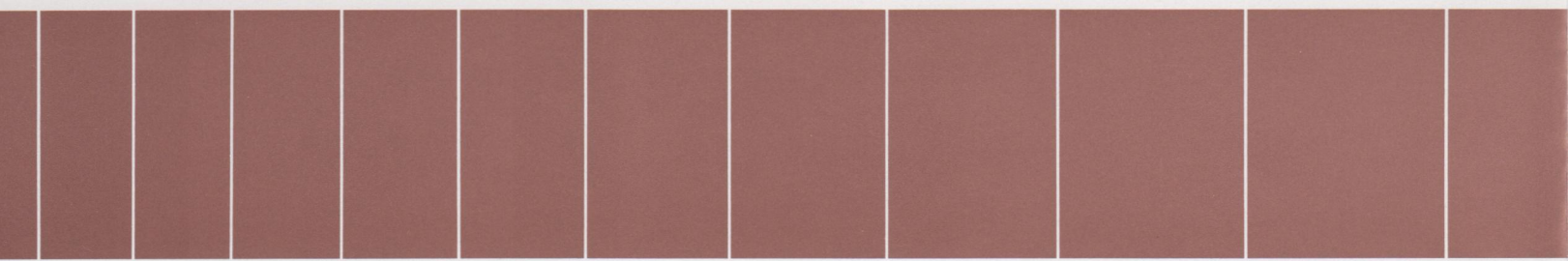
Copper Cricket™

Solar Hot Water at its Finest



***With the
revolutionary
“Geyser Pumping
Action.”***

***Uses no pumps,
electricity,
moving parts
or rooftop tanks.***



The Only System Using the Patented Geyser Pumping Action

The Geyser Pumping Action

Unlike active solar systems, using motors, pumps and valves, the Copper Cricket uses a revolutionary passive process called *Geyser Pumping* which was developed in Oregon by a group of physicists, chemists and engineers. Their goal was to create a solar system that was freezeproof, lightweight, had no moving parts or electronics, required no maintenance, was easy to install and was superior in efficiency to other passive systems. After nine years, they achieved their goal and now it's ready for you.

This patented process works much like a coffee percolator. A water-alcohol mixture "perks" in the rooftop collector and carries the heated mixture down to the heat exchanger under the hot water tank. The heat is then efficiently transferred to the water in the tank. The water-alcohol mixture never comes into direct contact with the domestic hot water supply and you *never* have to worry about the mixture freezing.

Attractive

The Copper Cricket allows you to enjoy a passive solar water heating system without having to mount an unsightly heavy tank on top of your roof. Our clean, trim collector can be flush mounted to any roof pitch from 3 in 12 to 21 in 12. This pleasing profile blends with the architecture of most any building and there is no exposed plumbing to detract from its beauty.

Easy to Install

We've made installation simple for you. All you need to do is mount the Copper Cricket collector on the roof, place the Solar Pad™ heat exchanger under the hot water tank and attach the Valve Pak™ on top. Except for the piping from the collector to the exchanger, we provide the necessary materials—from roof jack to pipe insulation, from roof cement to anchor rods, right down to the nuts and washers.

Easy to Use

With the Copper Cricket there's no need to set dials or throw switches—just turn on the hot water and enjoy. The only maintenance required is flushing the potable water side of the heat exchanger periodically to eliminate "scale" deposits. The water-alcohol mixture on the solar side *never* needs changing.

Economical

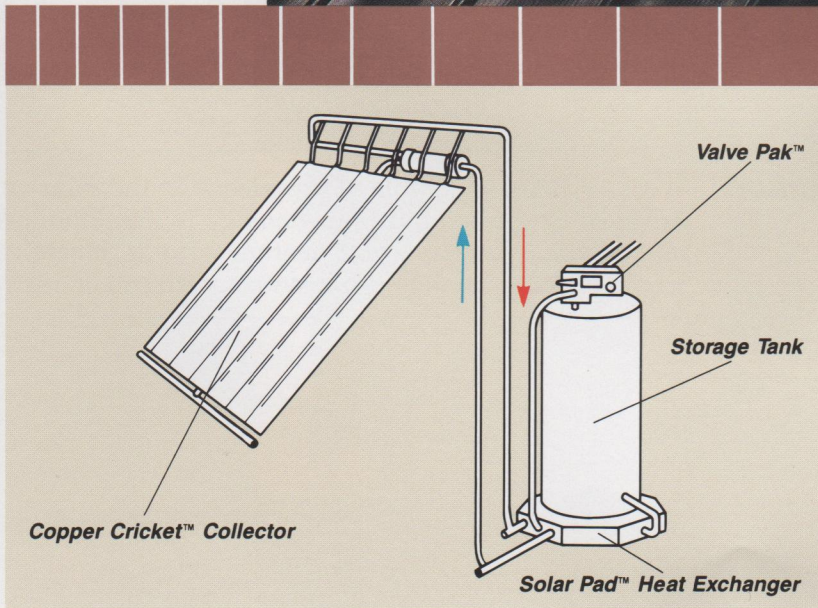
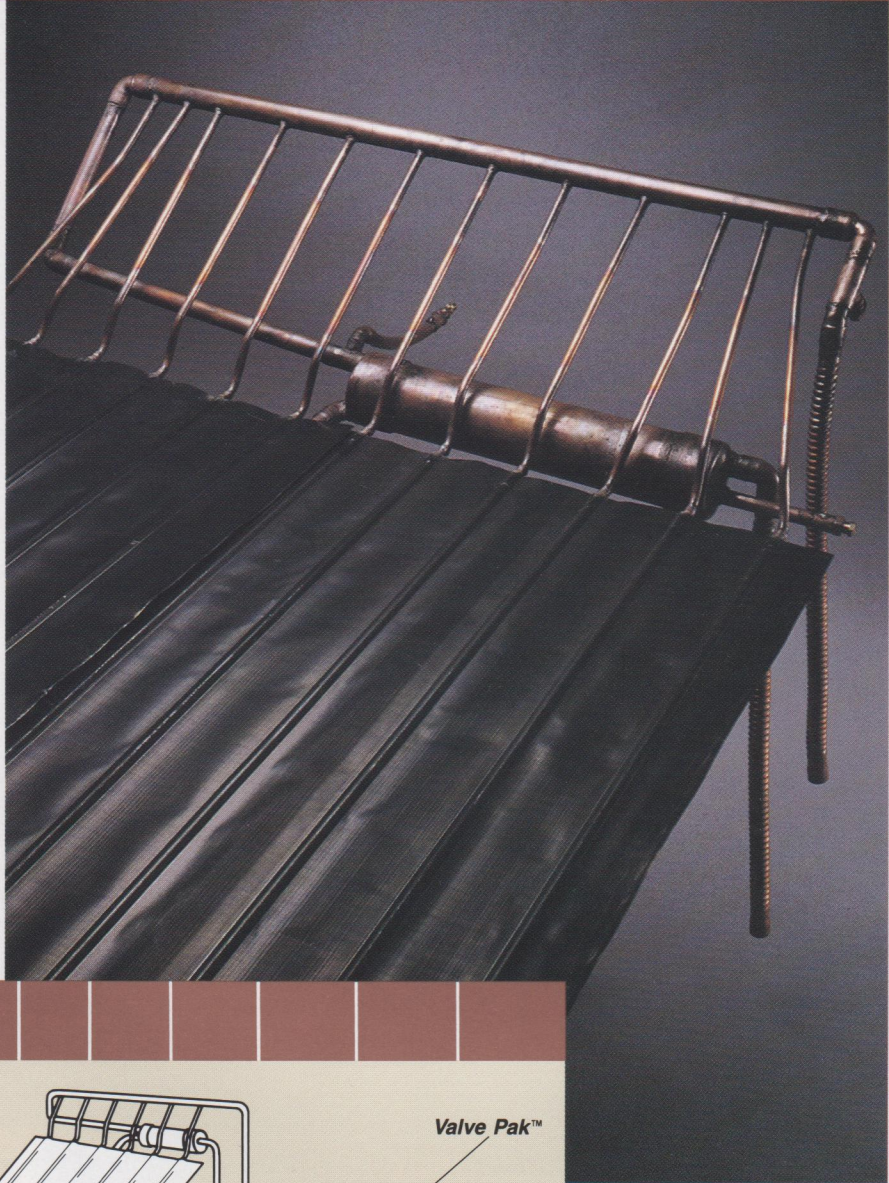
The Copper Cricket performs as well as any system on the market. With no electrical or moving parts, no maintenance required and the risk of freezing eliminated, the Copper Cricket will save you money in installation and maintenance, in addition to the lifetime energy savings.

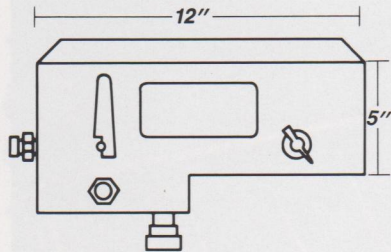
10 Year Guarantee

We back the Copper Cricket with a 10 year warranty, and it's built to last the life of your home.

► The Copper Cricket is constructed of copper tubing, which is housed inside the bronze anodized aluminum frame. The copper tubing in the top replaces the pumps, controls, valves, sensors, wires and maintenance of active solar energy systems. It also does away with the weight, risk of freezing and unsightly tanks used in other passive solar energy systems. The "perking" action of the geyser pumping system is the only moving force.

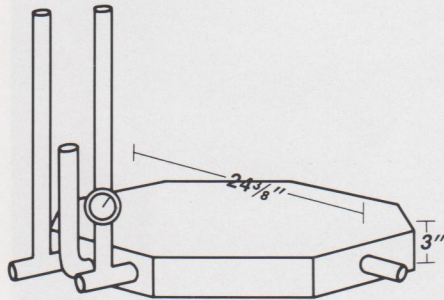
▼ Like the "perking" of a coffee pot, vapor created by the heating of the Copper Cricket's collector tubes starts the geyser pumping action. This action delivers the heated water-alcohol mixture from the collector down to the Solar Pad heat exchanger located under the hot water tank, where it is efficiently transferred to the domestic hot water tank, with no moving parts. The Valve Pak on the hot water integrates the system to your domestic water supply.





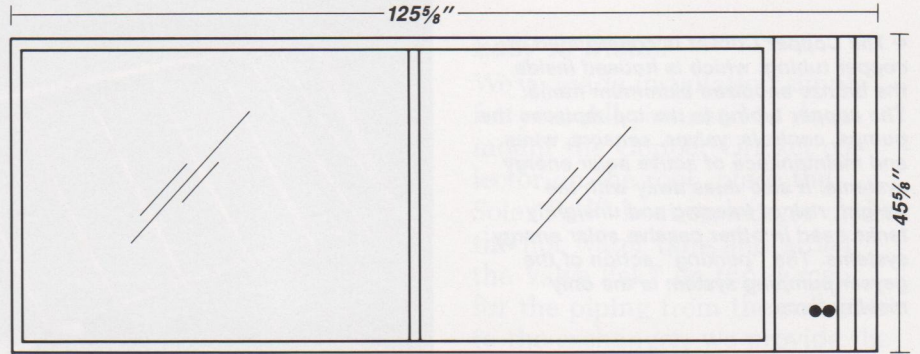
Valve Pak™

The Valve Pak houses the tempering valve, heat exchanger control valve and the domestic water connections. All fittings are $\frac{3}{4}$ ".



Solar Pad™

The Solar Pad heat exchanger is an efficient, double wall, thermo-siphon design which transfers solar heat to the hot water tank. All fittings are $\frac{3}{4}$ ".



Copper Cricket™ Collector

Absorber .008" Roll-formed copper with black chrome selective coating over nickel plate.

Plumbing $\frac{3}{8}$ " copper risers, 1" internal copper manifolds and $\frac{3}{4}$ " external copper connectors.

Glazing $\frac{1}{8}$ " low-iron tempered glass textured to reduce glare.

Glass Seal Extruded polyvinyl-chloride channel with vulcanized corners.

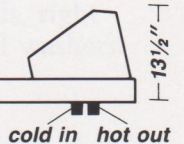
Insulation Foil faced insulation board and fiberglass blanket.

Frame Bronze anodized extruded aluminum.

Backing Bronze embossed .018" aluminum sheet.

Weight 145 lbs. dry, 158 lbs. full.

Gross Area 39.91 sq. ft.



Sage Advance Corporation

With 43 years of combined experience in the solar energy field, Sage Advance Corporation uses technology to eliminate problems and maintenance in solar water heating systems. Please call us. We would be happy to discuss our system with you or answer any questions.

Manufactured by:
Sage Advance Corporation
4209 W. 6th Avenue, Suite A
Eugene, Oregon 97402
(503) 485-1947